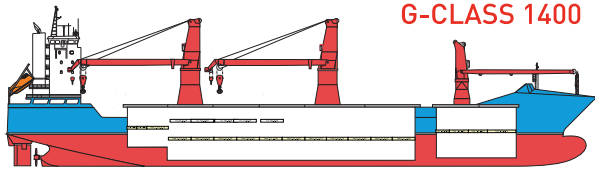


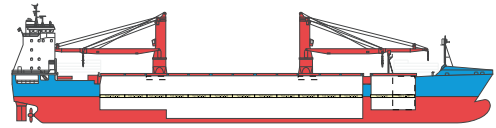
SHIP CLASS TYPE & NAMES	BUILT	DWT	LOA	LONGEST HOLD	BALE	GEAR
G-CLASS 1400 • INDUSTRIAL GRACE • INDUSTRIAL GUIDE	2010	19,347 ^{MT}	168.68 ^M	83.57 ^M	22,505 ^{CBM}	COMBI 1400 ^{MT} 2X700 MT PLUS 1X180 MT
G-CLASS 900 • OCEAN GRAND (U.S. FLAG) • OCEAN GLORY (U.S. FLAG)	2015	19,834 ^{MT}	170.93 ^M	86.04 ^M	26,400 ^{CBM}	COMBI 900 ^{MT} 2X450 MT PLUS 1X120 MT
G-CLASS 800 • OCEAN GIANT (U.S. FLAG) • OCEAN GLOBE (U.S. FLAG)	2010-12	16,868 ^{MT}	166.15 ^M	86.08 ^M	22,449 ^{CBM}	COMBI 800 ^{MT} 2X400 MT PLUS 1X120 MT
F-CLASS 800 • OCEAN FREEDOM (U.S. FLAG) • INDUSTRIAL FAITH • INDUSTRIAL FIGHTER • INDUSTRIAL FORCE	2010-11	14,360 ^{MT}	153.80 ^M	83.75 ^M	19,109 ^{CBM}	COMBI 800 ^{MT} 2X400 MT PLUS 1X80 MT
J-CLASS 700 • OCEAN JAZZ (U.S. FLAG)	2010	11,000 ^{MT}	162.3 ^M	132.00 ^M	20,900 ^{CBM}	COMBI 700 ^{MT} 2X350 MT PLUS 1X200 MT FLO/FLO RO/RO
S-CLASS 500 • INDUSTRIAL SKIPPER • INDUSTRIAL STRENGTH • INDUSTRIAL SWIFT • INDUSTRIAL SONG	2016-17	12,300 ^{MT}	147.0 ^M	76.50 ^M	16,180 ^{CBM}	COMBI 500 ^{MT} 2X250 MT
E-CLASS 500 • INDUSTRIAL EAGLE • INDUSTRIAL ECHO • INDUSTRIAL EDGE	2008-10	10,000 ^{MT}	139.0 ^M	76.00 ^M	14,457 ^{CBM}	COMBI 500 ^{MT} 2X250 MT
R-CLASS 500 • INDUSTRIAL RANGER • INDUSTRIAL REVOLUTION • INDUSTRIAL ROYAL • INDUSTRIAL RUBY	2005	9,674 ^{MT}	134.55 ^M	58.50 ^M	13,875 ^{CBM}	COMBI 500 ^{MT} 2X250 MT
D-CLASS 500 • INDUSTRIAL DART • INDUSTRIAL DESTINY • INDUSTRIAL DIAMOND • INDUSTRIAL DOLPHIN	2006-08	8,034 ^{MT}	119.8 ^M	72.00 ^M	10,532 ^{CBM}	COMBI 500 ^{MT} 2X250 MT
C-CLASS 400 • OCEAN CRESCENT (U.S. FLAG) • INDUSTRIAL CAPE • INDUSTRIAL CENTURY • INDUSTRIAL CHALLENGER • INDUSTRIAL CHARGER	2000-02	8,034 ^{MT}	119.8 ^M	72.00 ^M	10,532 ^{CBM}	COMBI 400 ^{MT} 2X200 MT
M-CLASS 160 • INDUSTRIAL MERCHANT • INDUSTRIAL MORE • MOMENTUM SCAN	2010-13	10,049 ^{MT}	116.26 ^M	70.50 ^M	11,581 ^{CBM}	COMBI 160 ^{MT} 2X80 MT
A-CLASS 160 • INDUSTRIAL ACE • INDUSTRIAL AIM • INDUSTRIAL AMA • CARIBBEAN TRADER	1998-99	5,2-6,200 ^{MT}	99.98 ^M	58.10 ^M	6,500 ^{CBM}	COMBI UP TO 160 ^{MT} 2X60 - 80 MT
H-CLASS 120 • HILDE • INDUSTRIAL HEDLAND • INDUSTRIAL HOBART • TIP BREMEN • TIP COPENHAGEN • TIP STOCKHOLM	2004-09	7,800 ^{MT}	119.00 ^M	MIN 44.25 ^M	9,500 ^{CBM}	COMBI UP TO 120 ^{MT} 2X40 - 60 MT

NEWBUILDINGS

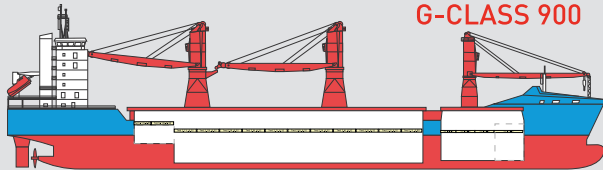
F-CLASS 900 DELIVERING 2018, 2019	2018-19	13,300 ^{MT}	149.99 ^M	115.80 ^M	23,200 ^{CBM}	COMBI 900 ^{MT} 2X450 MT
C-CLASS 300 DELIVERING 2018, 2019	2018-19	8,500 ^{MT}	99.99 ^M	60.90 ^M	9,350 ^{CBM}	COMBI 300 ^{MT} 2x150 MT



G-CLASS 1400



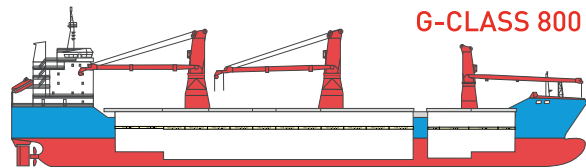
E-CLASS 500



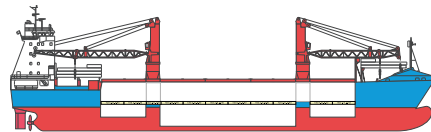
G-CLASS 900



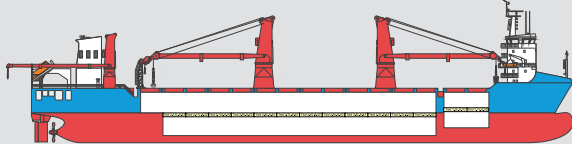
D-CLASS 500



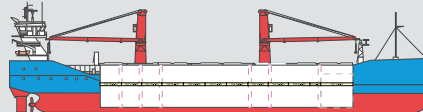
G-CLASS 800



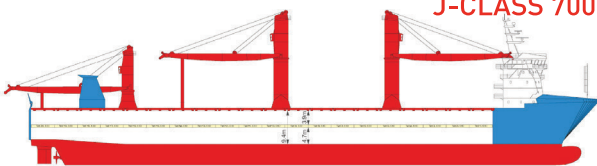
C-CLASS 400



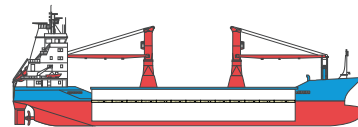
F-CLASS 800



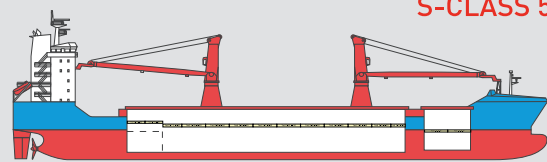
M-CLASS 160



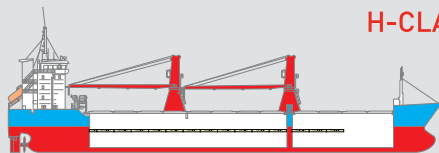
J-CLASS 700



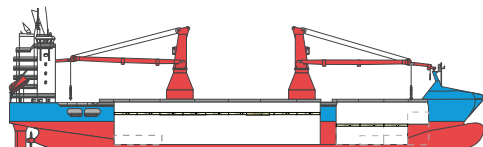
A-CLASS 160



S-CLASS 500



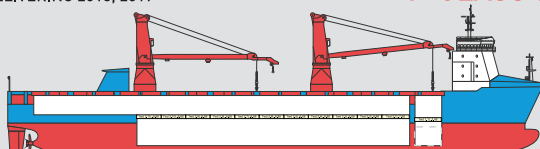
H-CLASS 120



R-CLASS 500

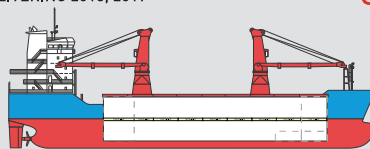
NEWBUILDINGS

DELIVERING 2018, 2019



F-CLASS 900

DELIVERING 2018, 2019



C-CLASS 300