



Main Particulars

| | |
|-----------|--------------------------|
| Type | Box-Hold MPP Tweendecker |
| Class | DNV GL |
| DWT | 6,265 MT |
| Max Draft | 7.28 M |
| LOA | 99.92 M |
| Beam | 17.00 M |
| Max Speed | About 13.5 Knots |

Capacities

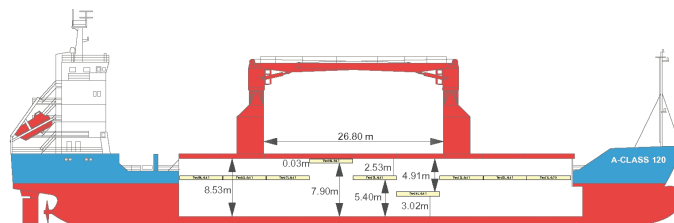
| | |
|-------------|--------------------------------------|
| Cargo Holds | 6,623 CBM Bale |
| Containers | 361 TEU |
| Cranes | 2 x 60 MT = 120 MT COMBI |
| Strengths | 20 MT/M ² on Tanktop |
| | 2.5 MT/M ² on Tweendeck |
| | 1.7 MT/M ² on Hatchcovers |

Special Features

| | |
|------------------|--|
| Highest Iceclass | |
| CO2 Fitted | |
| IMO Fitted | |
| Australia Fitted | |

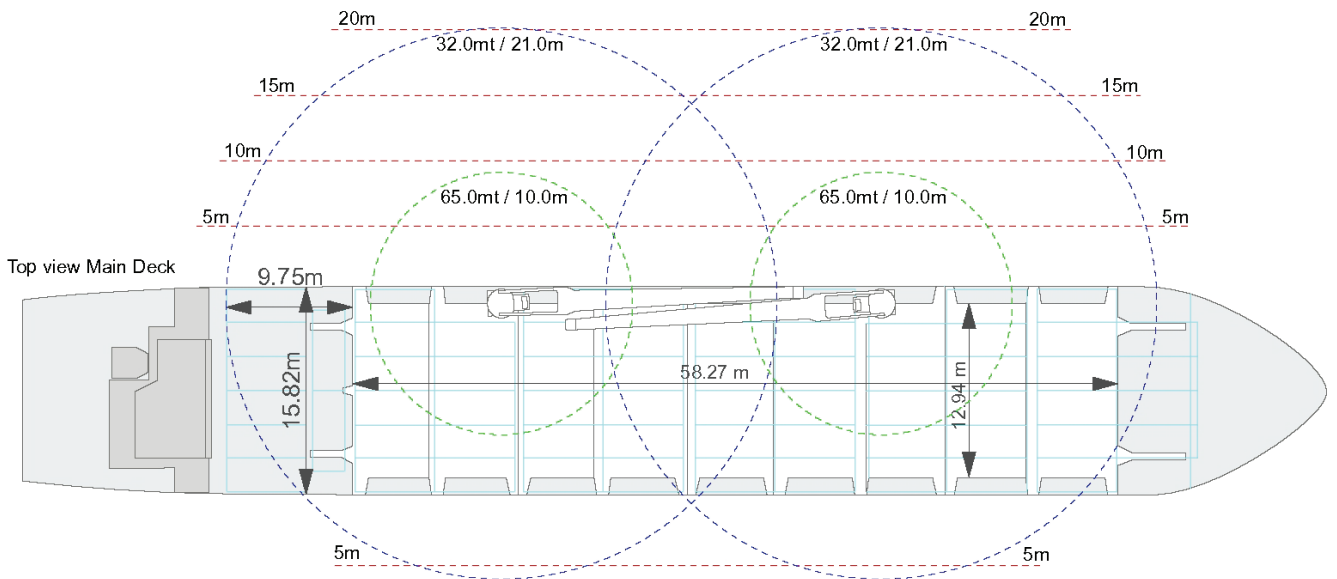
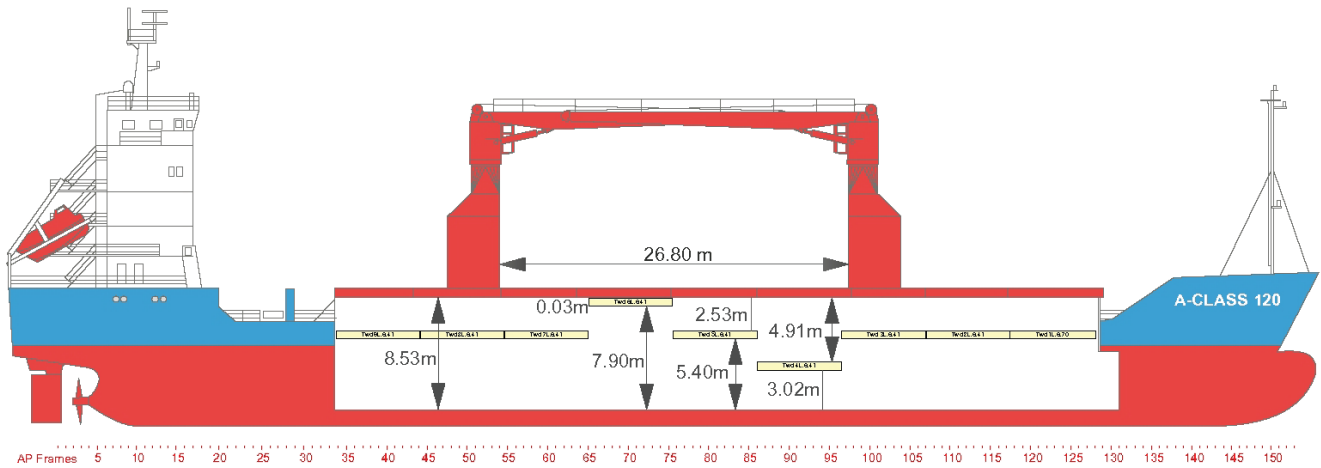
A-Class Vessels

| | |
|------------------|--------------------------|
| Industrial Aim | A-Class 160 - Built 1999 |
| Industrial Ama | A-Class 120 - Built 1998 |
| Caribbean Trader | A-Class 120 - Built 1999 |

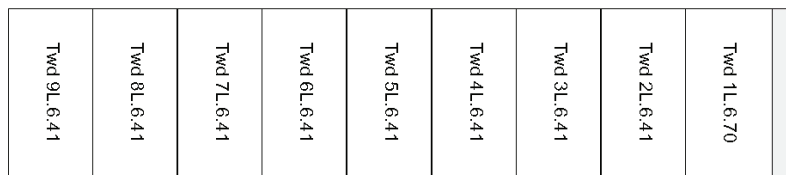


All above details are given in good faith but without guarantee. This description may not be used as basis for time charter parties or booking notes. If you would like to receive further information please contact our sales team at imarine@intermarine.com





Top view Tweendeck



AP in meter 5 10 15 20 25 30 35 40 45 50 55 60 65 70 75 80 85 m from AP

Top view Tank Top

