



**Main Particulars**

Type	Box-Hold MPP Tweendecker
Class	DNV GL
DWT	5,240 MT
Max Draft	6.28 M
LOA	99.98 M
Beam	15.82 M
Max Speed	About 14.5 Knots

**Capacities**

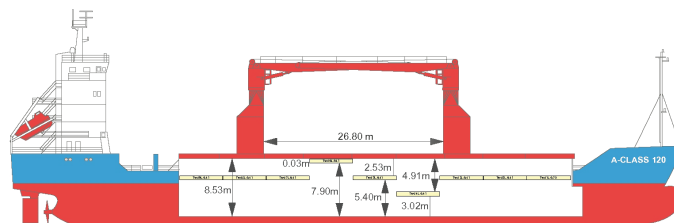
Cargo Holds	6,450 CBM Bale
Containers	372 TEU
Cranes	2 x 60 MT = 110 MT COMBI
Strengths	15 MT/M <sup>2</sup> on Tanktop 2.5 MT/M <sup>2</sup> on Tweendeck 1.75 MT/M <sup>2</sup> on Hatchcovers

**Special Features**

C02 Fitted
Australia Fitted

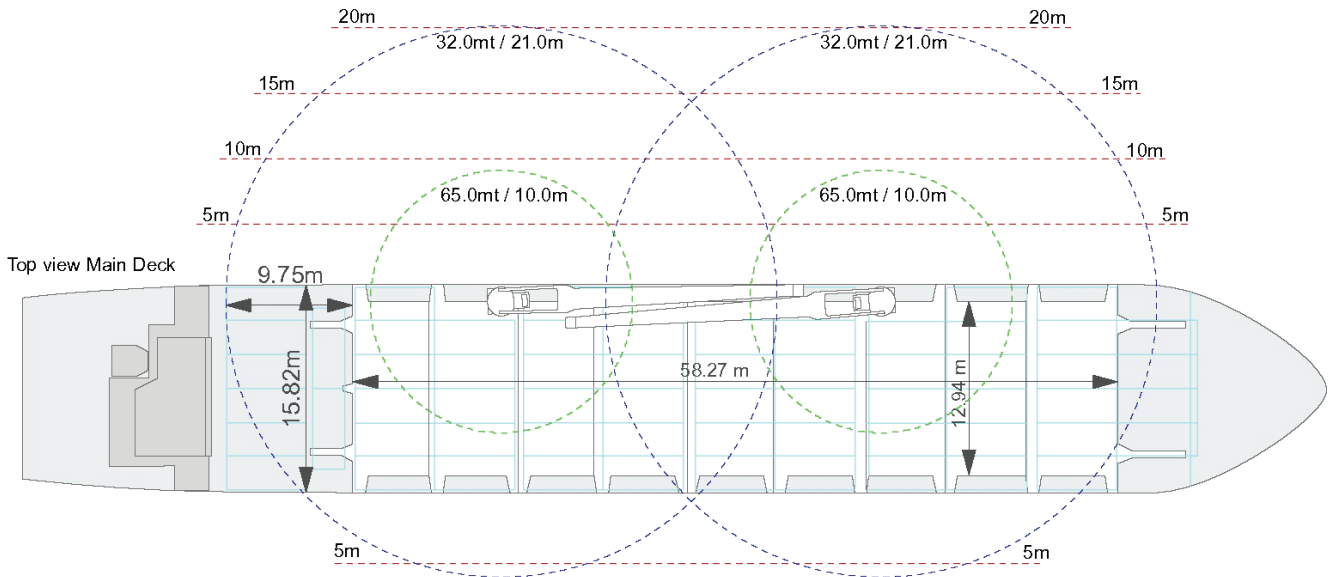
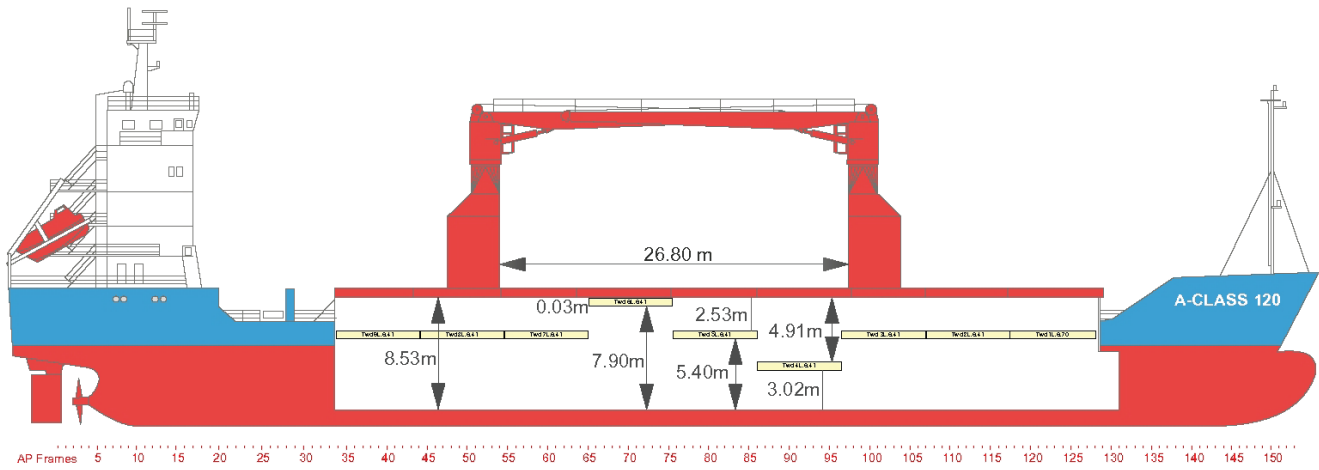
**A-Class Vessels**

Industrial Ace	A-Class 120 - Built 1999
Industrial Aim	A-Class 160 - Built 1999
Industrial Ama	A-Class 160 - Built 1998
Caribbean Trader	A-Class 160 - Built 1999

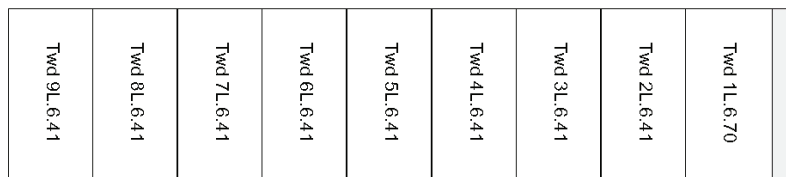


All above details are given in good faith but without guarantee. This description may not be used as basis for time charter parties or booking notes. If you would like to receive further information please contact our sales team at [imarine@intermarine.com](mailto:imarine@intermarine.com)





Top view Tweendeck



AP in meter 5 10 15 20 25 30 35 40 45 50 55 60 65 70 75 80 85 m from AP

Top view Tank Top

