

Main Particulars

Type	Box-Hold MPP Tweendecker
Class	DNV GL
DWT	6,288 MT
Max Draft	7.28 M
LOA	99.92 M
Beam	17.00 M
Max Speed	About 13.5 Knots

Capacities

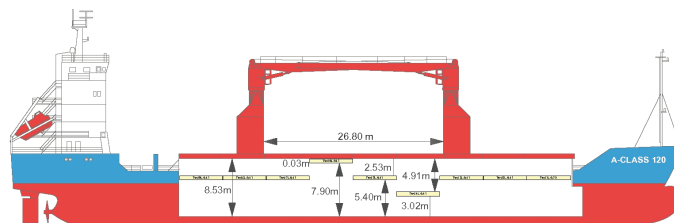
Cargo Holds	6,700 CBM Bale
Containers	360 TEU
Cranes	2 x 60 MT = 120 MT COMBI
Strengths	15.3 MT/M ² on Tanktop
	2.5 MT/M ² on Tweendeck
	1.7 MT/M ² on Hatchcovers

Special Features

Highest Iceclass	
CO2 Fitted	
IMO Fitted	
Australia Fitted	

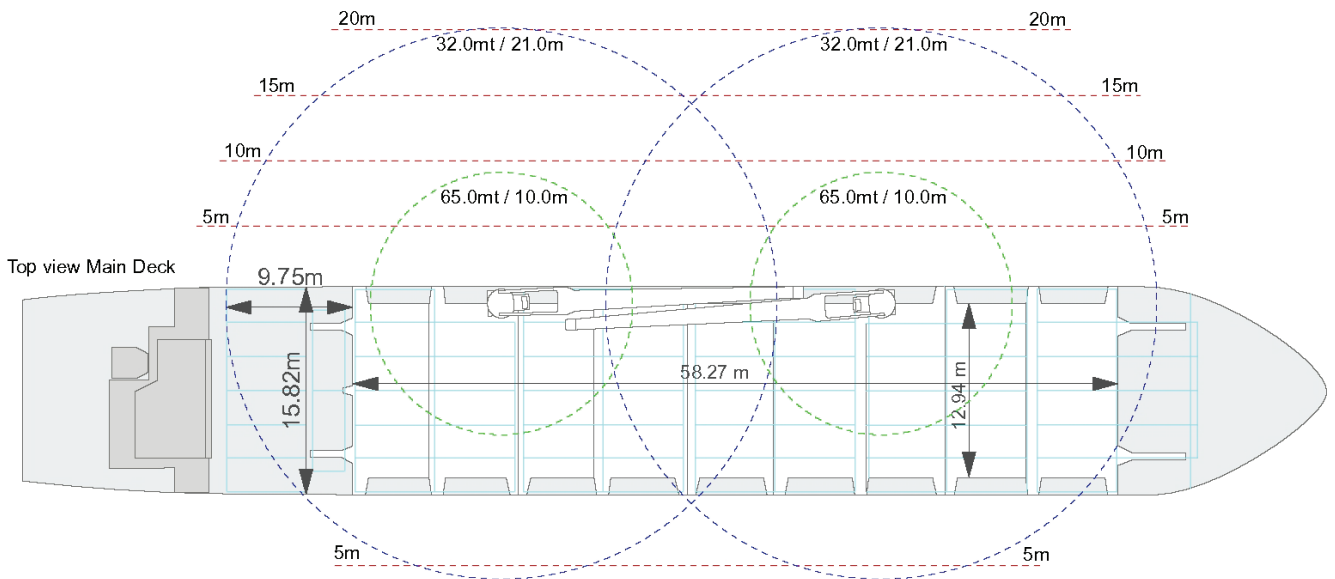
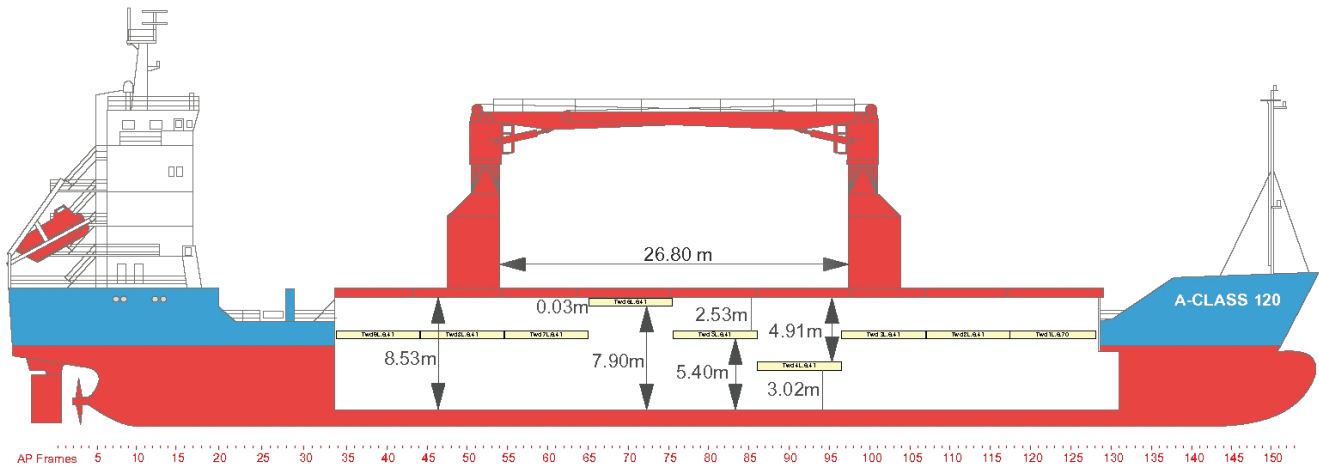
A-Class Vessels

Industrial Aim	A-Class 160 - Built 1999
Industrial Ama	A-Class 120 - Built 1998
Caribbean Trader	A-Class 120 - Built 1999

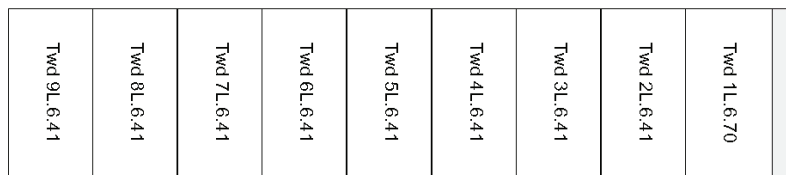


All above details are given in good faith but without guarantee. This description may not be used as basis for time charter parties or booking notes. If you would like to receive further information please contact our sales team at imarine@intermarine.com





Top view Tweendeck



AP in meter 5 10 15 20 25 30 35 40 45 50 55 60 65 70 75 80 85 m from AP

Top view Tank Top

