



Main Particulars

Type	Heavy-Lift Box-Hold MPP Tweendecker
Class	DNV GL
DWT	8,034 MT
Max Draft	7.72 M
LOA	119.80 M
Beam	20.00 M
Max Speed	About 16.0 Knots

Capacities

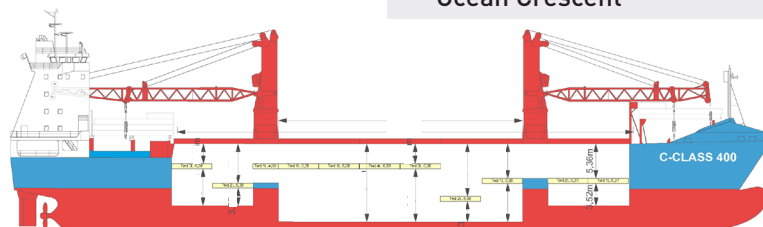
Cargo Holds	10,532 CBM Bale
Containers	516 TEU / 250 FEU
Cranes	2 x 200 MT = 400 MT COMBI
Strengths	15 MT/M ² on Tanktop
	3.5 MT/M ² on Tweendeck
	2.5 MT/M ² on Hatchcovers

Special Features

C02 Fitted
IMO Fitted
Australia Fitted

C-Class 400 Vessels

Industrial Challenger	Built 2000
Industrial Charger	Built 2000
Industrial Cape	Built 2001
Industrial Century	Built 2001
Ocean Crescent	Built 2002



All above details are given in good faith but without guarantee. This description may not be used as basis for time charter parties or booking notes. If you would like to receive further information please contact our sales team at imarine@intermarine.com