

### Main Particulars

Type	Heavy-Lift Box-Hold MPP Tweendecker
Class	DNV GL
DWT	16,476 MT
Max Draft	9.50 M
LOA	166.15 M
Beam	22.90 M
Max Speed	About 16.0 Knots

### Capacities

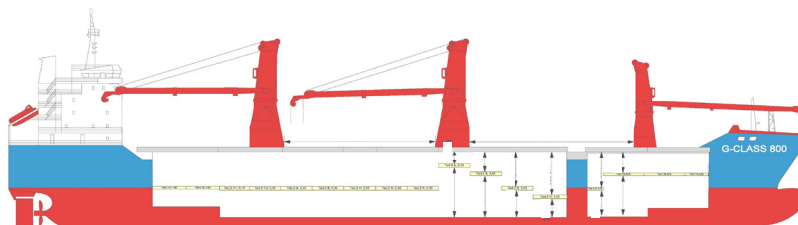
Cargo Holds	22,502 CBM Bale
Containers	1023 TEU
Cranes	2 x 400 MT = 800 MT COMBI <small>plus 1x120 MT</small>
Strengths	18 MT/M <sup>2</sup> on Tanktop
	3.5 MT/M <sup>2</sup> on Tweendeck
	5 MT/M <sup>2</sup> on Hydraulic Hatchcovers
	8 MT/M <sup>2</sup> on Pontoon Hatchcovers

### Special Features

C02 Fitted
IMO Fitted
Highest Iceclass
Australia Fitted

### G-Class 800 Vessels

Ocean Globe	Built 2010
Ocean Giant	Built 2012



All above details are given in good faith but without guarantee. This description may not be used as basis for time charter parties or booking notes. If you would like to receive further information please contact our sales team at [imarine@intermarine.com](mailto:imarine@intermarine.com)