

## Main Particulars

Type	Heavy-Lift Box-Hold MPP Tweendecker
Class	DNV GL
DWT	19,834 MT
Max Draft	8.10 M
LOA	170.93 M
Beam	25.20 M
Max Speed	About 16.5 Knots

## Capacities

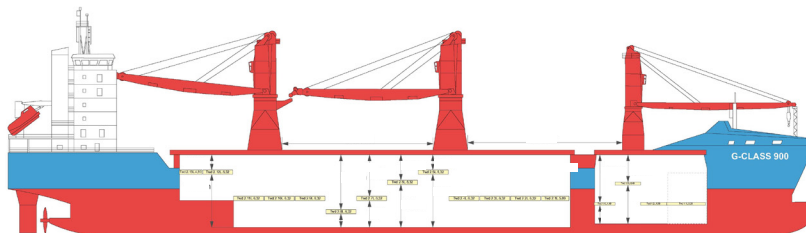
Cargo Holds	26,400 CBM Bale
Containers	941 TEU
Cranes	2 x 450 MT = 900 MT COMBI plus 1x120 MT
Strengths	22 MT/M <sup>2</sup> on Tanktop
	6 MT/M <sup>2</sup> on Tweendeck
	5 MT/M <sup>2</sup> on Hydraulic Hatchcovers
	8 MT/M <sup>2</sup> on Pontoon Hatchcovers

## Special Features

IMO Fitted	
------------	--

## G-Class 900 Vessels

Ocean Glory	Built 2015
Ocean Grand	Built 2015



All above details are given in good faith but without guarantee. This description may not be used as basis for time charter parties or booking notes. If you would like to receive further information please contact our sales team at [imarine@intermarine.com](mailto:imarine@intermarine.com)